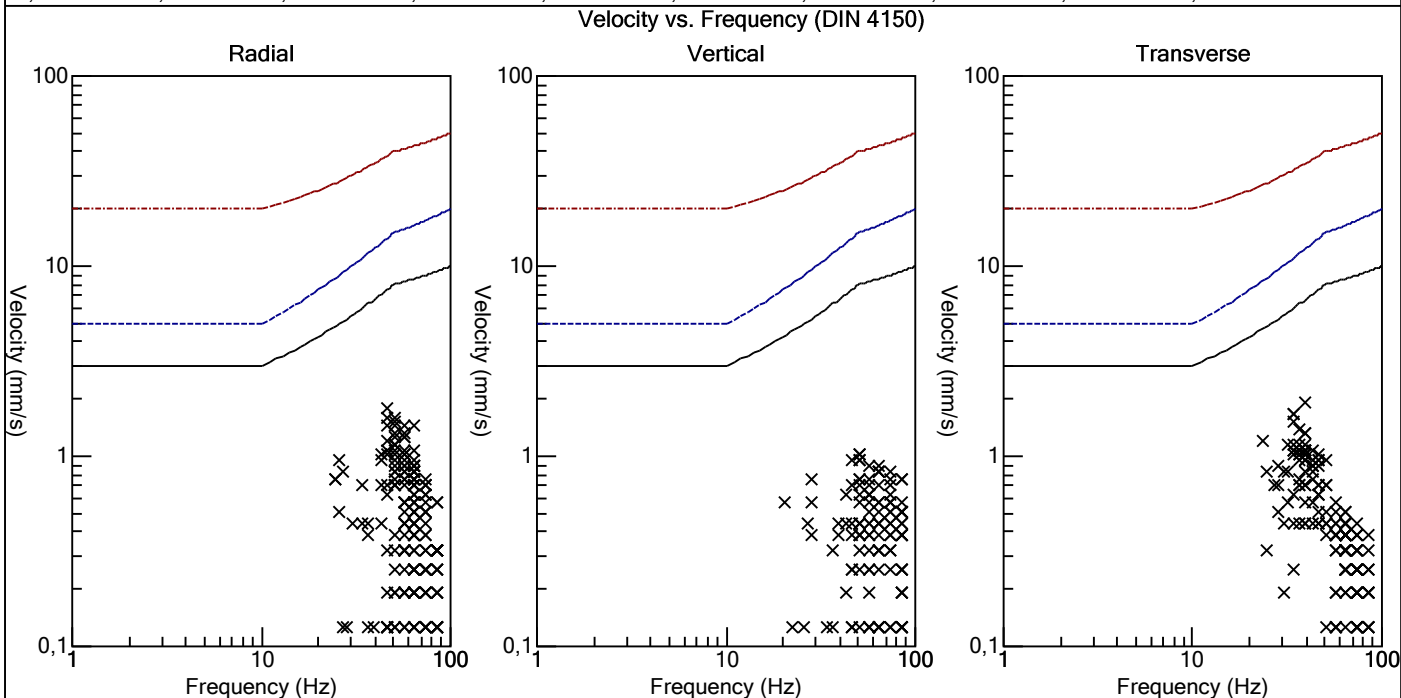
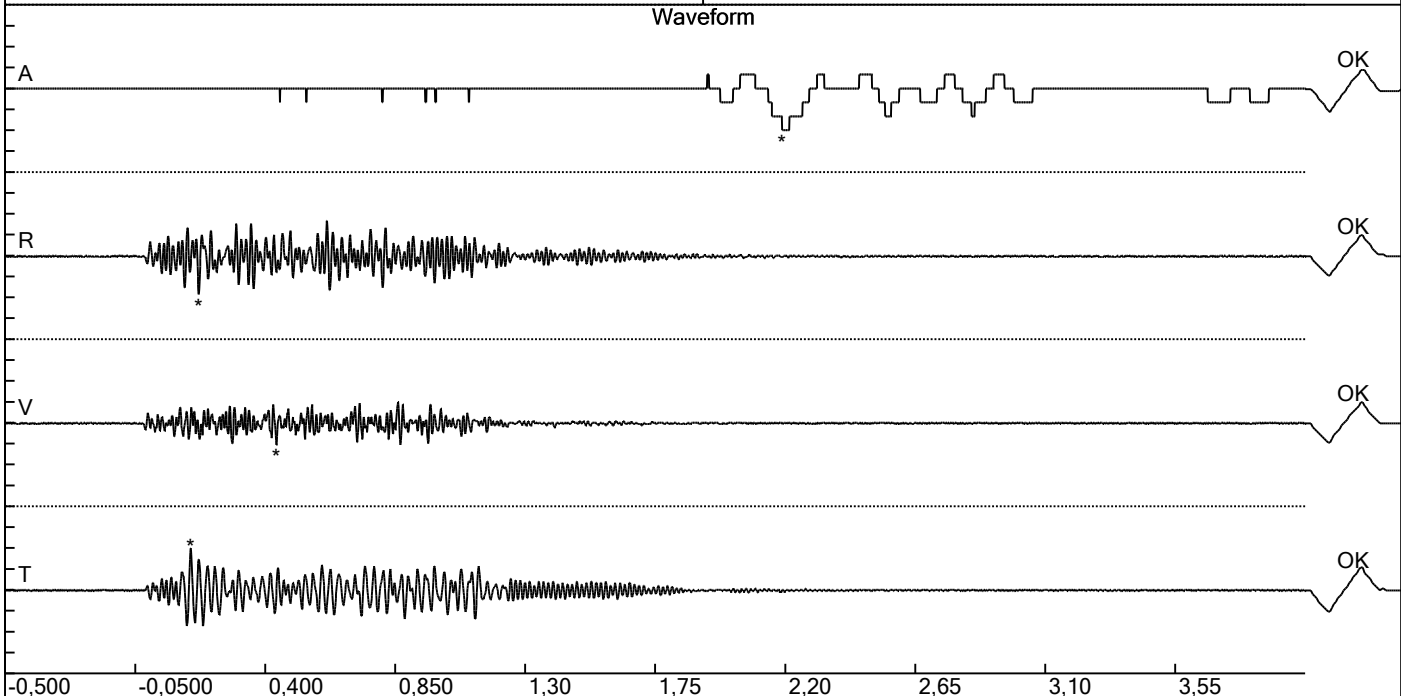


Carrière de BRS
 Surprofondeur -30 phase 2
 Tir du 17/10/2018
 Sismographe placé au
 261 Halleux
 4710 Comblain-au-Pont

Record: 1789201810171501088.dtb
 Number: 088
 Seismograph: Mini-Seis
 Type of Record: Waveform
 Date: 17-10-18 15:01:00
 SN: 1789
 Duration: 4,50 Seconds
 Sample Rate: 1024
 Pre-Trigger: 0,5 Seconds
 Seismic Trigger: 0,508 mm/s
 Acoustic Trigger: 142,1 dB
 Voltage: 6,5

Peaks and Frequencies	Graph Information
PPV Maximum: 1,91 mm/s A: 109,5 dB @ 3,8 Hz (2,19 s) R: 1,78 mm/s @ 46,5 Hz (0,170 s) V: 1,02 mm/s @ 51,2 Hz (0,438 s) T: 1,91 mm/s @ 39,3 Hz (0,142 s) Last Calibration Date: 05	Time Range: -0,500 s to 4,00 s Acoustic Scale: 0,0300 Mb/div Seismic Scale: 0,955 mm/s/div Time Intervals: 0,450 Seconds



Carrière de BRS
 Surprofondeur -30 phase 2
 Tir du 17/10/2018
 Sismographe placé au
 261 Halleux
 4710 Comblain-au-Pont

Record: 1789201810171501088.dtb
 Number: 088
 Seismograph: Mini-Seis
 Type of Record: Waveform
 Date: 17-10-18 15:01:00
 SN: 1789
 Duration: 4,50 Seconds
 Sample Rate: 1024
 Pre-Trigger: 0,5 Seconds
 Seismic Trigger: 0,508 mm/s
 Acoustic Trigger: 142,1 dB
 Voltage: 6,5

Peaks and Frequencies	Graph Information
PPV Maximum: 1,91 mm/s A: 109,5 dB @ 3,8 Hz (2,19 s) R: 1,78 mm/s @ 46,5 Hz (0,170 s) V: 1,02 mm/s @ 51,2 Hz (0,438 s) T: 1,91 mm/s @ 39,3 Hz (0,142 s) Last Calibration Date: 05	Time Range: -0,500 s to 4,00 s Acoustic Scale: 0,0300 Mb/div Seismic Scale: 0,955 mm/s/div Time Intervals: 0,450 Seconds

